



Thermal Imaging Front Attachment
DIPOL Pointer

Thermal Imaging Front Attachment DIPOL Pointer



Device



Carrying pouch



Optic cleaning cloth



Manual



Scope of delivery:

Device, pouch, cleaning cloth for optic, user manual

Thermal Imaging Front Attachment DIPOL Pointer



MODEL	Pointer
Sensor, array format/ Pixel pitch	384 x 288 px / 17 μ m
Spectral response	8-14 μ m
Frame rate	50 Hz
Lens	F40/1.0
Magnification	1X
Angle of view	9.3° x 7.0°
Focus limit	10 ... ∞ m
Detection range (object of 0.5x1.8m, Johnson criteria)	2000 m
Display type / resolution	OLED / 1024x768 px
Exit pupil diameter	30 mm
Batteries type	2 x CR123A Lithium
Accumulator type	2 x LC16340
Outer power source type	5V - micro USB type C
Operating time (at +20°C)	4 hours
Operating temperature	- 20 ... +50 °C
Impact load	600 G
Degree of protection by IEC 60529	IP66
Dimensions	175 x 93 x 65 mm
Weight	0,58 kg



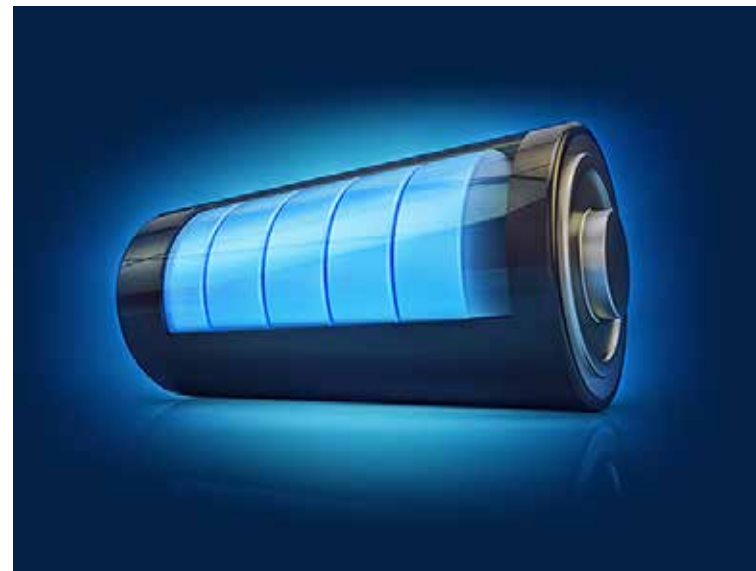
✓ High-quality imaging

A high quality image due to 1024x768 display resolution and wide operating temperature range from -20 to +50 C°. The integrated contrast enhancement system ensures a sharp image of objects with even smallest temperature differences.



✓ Power efficiency

Low power consumption of the thermal sensor increases the device's operating time to over 4 hours when using original batteries from well-known brands. A power bank with 5000 mAh can even triple this time.



✓ Long detection range

Due to maximized heat conduction, the new lens construction delivers a high-contrast and detailed image in very high resolution. Object detection and recognition are now possible at distances of 2000m / 800m (by Johnson criteria).



Thermal Imaging Front Attachment DIPOL Pointer



✓ Large exit pupil

The 30mm exit pupil ensures larger eyepiece and better viewing comfort for more quickness and accuracy.

✓ Aluminum housing

Very robust and light aluminum housing efficiently conducts the heat out of the device and ensures effective cooling and flawless operation.

✓ Rain & Splashwaterproof

DIPOL Pointer is protected against splash water and heavy rain.



✓ Simple & intuitive control

Like all DIPOL devices, the Pointer have a simple and intuitive control - a very successful concept in diverse hunting situations.

A practical menu is mastered with just one controller, which is also used for quick image and thermal sensor performance adjustments. The MENU controller is easy to operate even when wearing gloves.

✓ Simple adjustment concept

Very simple adjustment concept enables repeatable accurate mounting and precise sighting without additional material costs.



Pointer

Perfect ergonomics for effortless and precise operation in the darkness.

Thermal Imaging Front Attachment DIPOL Pointer



1. Black/white



2. Irish



3. Magenta



4. Fluorescent



5. Sepia



6. Fusion



7. Acid Fox



8. Quarz



9. Rainbow



10. Night Tube



Pointer

The large selection of image colors meets every taste and preference. Each color palette can be inverted.



Diversity

The Pointer can be used as a separate observational device by attaching an (optional) eyepiece to it.

With a high-quality clamp adaptors made by well-known manufacturers, the Pointer can be mounted onto objectives of the most day optic devices.

Please note, that despite the high accuracy, removing and re-attaching of the device sometimes could lead to minor deviations of the point of impact of approx. 1 MOA on 100m.



Marketing plan TFA Pointer

June	July	August	September	October	November
Market research New product concept discussion Sample creation	R&D work Sample production	Technical tests Hunting tests	Mass production Marketing content production	Partners and dealers mailing Start delivery products to dealer	Sales start

Manufacturer: SPF "DIPOL" Ltd.

Republic of Belarus, 210033, Vitebsk, Lazo street, 115A

Tel.: +375 (212) 53-00-63 Fax: +375 (212) 53-00-68

E-mail: contact@dipol.by

dipol.by

Please visit our channel on YouTube

 <https://youtu.be/fc0a008KvRg>


VE NE. VI DI... DIPOL